



DESIGNS / UTILITY CONSTRUCTION / TECHNOLOGIES / ELECTRIC

COST-EFFECTIVE DATA

Aerial Drone Services

FOR ALL INDUSTRIES

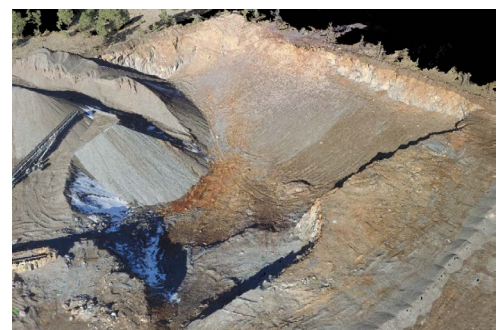
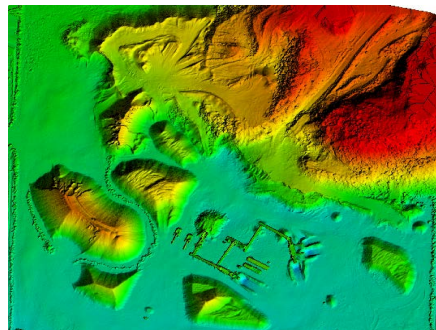
Mapping UAS's (Unmanned Aerial Systems, or drones) are replacing traditional methods of land surveying and aerial inspections. Industry professionals, such as in the construction-, agriculture- and farming-, mining-, logistics-, real-estate-, city-planning-, and insurance industries, understand the impact drones have on the use of aerial technology and are embracing the improvement of data collection via drones.

By integrating human intelligence and drone technology, aerial data collection is improving industry workflows at a very rapid pace. Deploying drones equals a significant amount of time and money saved, due to faster site progress monitoring cycle, earlier error detection and efficient tracking of assets. In addition, it allows us to safely and easily map or inspect hard to reach or dangerous areas, without putting workers at risk.

We Manage the Entire Process:

BPG's background and extensive knowledge in Design, Engineering, Construction, Mapping, Technologies, and Surveying experience makes us more than just drone pilots. We understand the value, the purpose, the workflow and the need for collecting accurate data for planning, designing, improvements and analysis. Due to our 20-year history in the industry, we apply our extensive knowledge to provide you with the most accurate and complete data collection.

BPG manages the entire drone process and beyond – piloting the drones, capturing the data, creation of drone-based images, video and analyzing the data for surveyance, mapping, inspection, tracking and monitoring.



High-Quality and Cost-Effective Data and Analysis via Images, Videos, Photogrammetry and Orthomosaics

- Photography including orthomosaics, videos, and photogrammetry. It allows us to do volume metrics analysis for stockpiles, cut- and fill analysis, and create site contours.
- Videos for visual inspections.
- Agricultural analysis using the near infrared spectrum.
- Site documentation (with photography and video).
- Document pre- and post-construction projects to verify conditions before and after.
- Planning and management of entire construction life cycles.

Tell us what you need, and we will find a solution.

BPG Designs, LLC · 602.954.2223 · info@BPGDesigns.com · oneBPG.com